

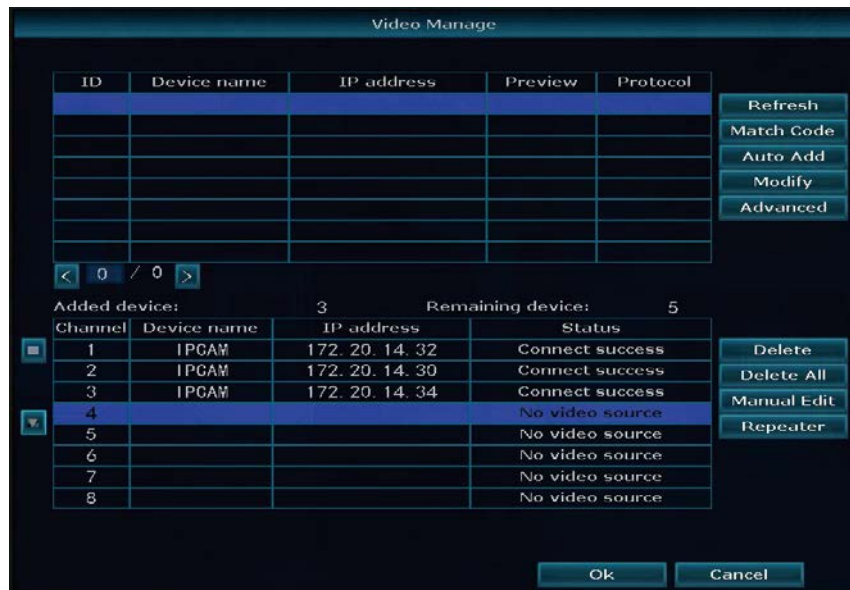
## Quick Operation Guide for the IPC

**Tips: Please complete the following steps before use.**

### Add a Camera by Code Matching:

#### 1. Code Matching Description

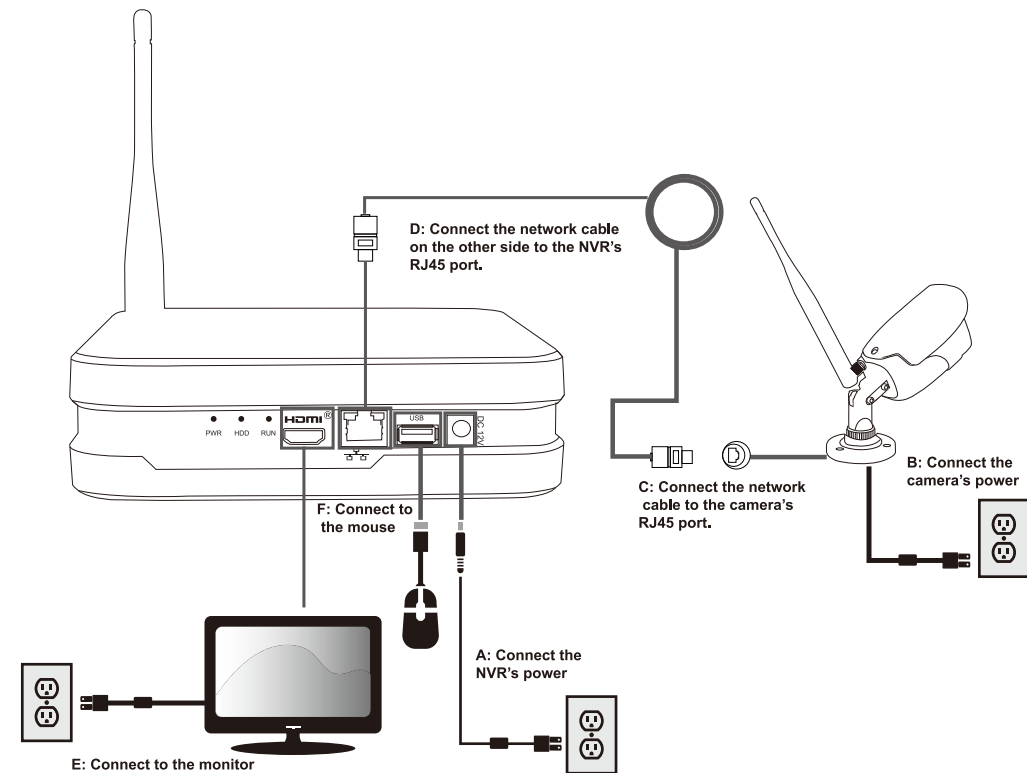
The code matching refers to pairing the NVR with the IPC, so that the IPC can automatically connect to the NVR and perform video transmission wirelessly. Before code matching, please ensure there is free channel to add cameras.



#### 2.Code Matching Steps

a. Unpack the device, power it on, and then connect it to a mouse, a monitor and other external devices. Please ensure both the camera and the NVR are powered on.

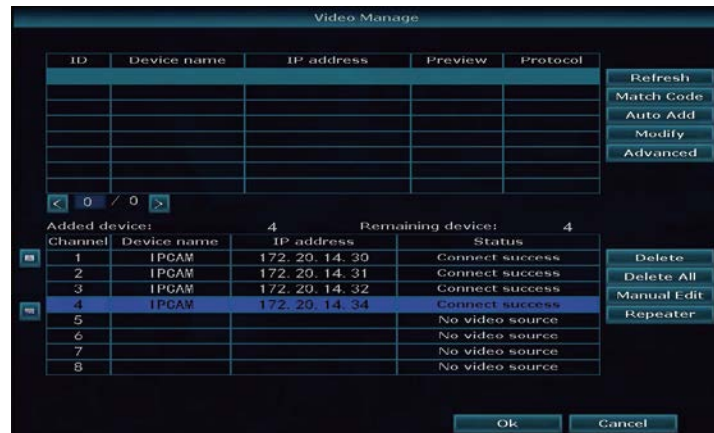
b. Use the network cable in the accessory box to connect the wireless camera to the network port of the NVR host. Please ensure the light within the port is on. Otherwise, the code can not be matched. Please check whether the network or switch can work properly. (If there are multiple wireless cameras requiring code matching, you can connect them to the router or switch at a time, and then connect the router or the switch's LAN port to the NVR.)



c. Right-click **[Video Manage]**-**[Refresh]**-**[Match Code]** to match the code. If the pop-up prompts you to input the password (the default password is null), just click "Yes", input the password, and then you can enter the video manage interface.



d. Finally, if you have successfully matched the code, you can unplug the network cable.



e. If it prompts the code matching fails, click **[Refresh]**. If no device is displayed on the list, it indicates that the network cable is in poor contact. Please check the camera power and network connection first before you match code again.



For more information,  
please visit:

[www.annke.com](http://www.annke.com)



Manufacturer: Shenzhen Kean Digital co., Ltd.  
Address: Rujun Building, Floor 4, No.105, the Center Road,  
Bantian Street, Longgang Zone, Shenzhen, China  
Tech Support: [support@annke.com](mailto:support@annke.com)