



Digital Video Recorder

Quick Start Guide



About this Manual

This Manual is applicable to Turbo Digital Video Recorder (DVR).

The Manual includes instructions for using and managing the product. Pictures, charts, images and all other information hereinafter are for description and explanation only. The information contained in the Manual is subject to change, without notice, due to firmware updates or other reasons. Please find the latest version in the company website .

Please use this user manual under the guidance of professionals.

Legal Disclaimer

REGARDING TO THE PRODUCT WITH INTERNET ACCESS, THE USE OF PRODUCT SHALL BE WHOLLY AT YOUR OWN RISKS. OUR COMPANY SHALL NOT TAKE ANY RESPONSIBILITES FOR ABNORMAL OPERATION, PRIVACY LEAKAGE OR OTHER DAMAGES RESULTING FROM CYBER ATTACK, HACKER ATTACK, VIRUS INSPECTION, OR OTHER INTERNET SECURITY RISKS; HOWEVER, OUR COMPANY WILL PROVIDE TIMELY TECHNICAL SUPPORT IF REQUIRED.

SURVEILLANCE LAWS VARY BY JURISDICTION. PLEASE CHECK ALL RELEVANT LAWS IN YOUR JURISDICTION BEFORE USING THIS PRODUCT IN ORDER TO ENSURE THAT YOUR USE CONFORMS THE APPLICABLE LAW. OUR COMPANY SHALL NOT BE LIABLE IN THE EVENT THAT THIS PRODUCT IS USED WITH ILLEGITIMATE PURPOSES.

IN THE EVENT OF ANY CONFLICTS BETWEEN THIS MANUAL AND THE APPLICABLE LAW, THE LATER PREVAILS.

Regulatory Information

FCC Information


FCC compliance: This equipment has been tested and found to comply with the limits for a Class A digital device, pursuant to part 15 of the FCC Rules. These limits are designed to provide reasonable protection against harmful interference when the equipment is operated in a commercial environment. This equipment generates, uses, and can radiate radio frequency energy and, if not installed and used in accordance with the instruction manual, may cause harmful interference to radio communications. Operation of this equipment in a residential area is likely to cause harmful interference in which case the user will be required to correct the interference at his own expense.

FCC Conditions

This device complies with part 15 of the FCC Rules. Operation is subject to the following two conditions:

1. This device may not cause harmful interference.
2. This device must accept any interference received, including interference that may cause undesired operation.

EU Conformity Statement

 This product and - if applicable - the supplied accessories too are marked with "CE" and comply therefore with the applicable harmonized European standards listed under the EMC Directive 2004/108/EC, the RoHS Directive 2011/65/EU.



2012/19/EU (WEEE directive): Products marked with this

symbol cannot be disposed of as unsorted municipal waste in the European Union. For proper recycling, return this product to your local supplier upon the purchase of equivalent new equipment, or dispose of it at designated collection points. For more information see: www.recyclethis.info



2006/66/EC (battery directive): This product contains a battery that cannot be disposed of as unsorted municipal waste in the European Union. See the product documentation for specific battery information. The battery is marked with this symbol, which may include lettering to indicate cadmium (Cd), lead (Pb), or mercury (Hg). For proper recycling, return the battery to your supplier or to a designated collection point. For more information see: www.recyclethis.info

Industry Canada ICES-003 Compliance

This device meets the CAN ICES-3 (A)/NMB-3(A) standards requirements.



Safety Instruction

These instructions are intended to ensure that user can use the product correctly to avoid danger or property loss.

The precaution measure is divided into “Warnings” and “Cautions”

Warnings: Serious injury or death may occur if any of the warnings are neglected.

Cautions: Injury or equipment damage may occur if any of the cautions are neglected.

	
Warnings Follow these safeguards to prevent serious injury or death.	Cautions Follow these precautions to prevent potential injury or material damage.



Warnings

- Proper configuration of all passwords and other security settings is the responsibility of the installer and/or end-user.
- In the use of the product, you must be in strict compliance with the electrical safety regulations of the nation and region. Please refer to technical specifications for detailed information.
- Input voltage should meet both the SELV (Safety Extra Low Voltage) and the Limited Power Source with 100~240 VAC or 12 VDC according to the IEC60950-1 standard. Please refer to technical specifications for detailed information.

- Do not connect several devices to one power adapter as adapter overload may cause over-heating or a fire hazard.
- Please make sure that the plug is firmly connected to the power socket.
- If smoke, odor or noise rise from the device, turn off the power at once and unplug the power cable, and then please contact the service center.

Preventive and Cautionary Tips

Before connecting and operating your device, please be advised of the following tips:

- Ensure unit is installed in a well-ventilated, dust-free environment.
- Unit is designed for indoor use only.
- Keep all liquids away from the device.
- Ensure environmental conditions meet factory specifications.
- Ensure unit is properly secured to a rack or shelf. Major shocks or jolts to the unit as a result of dropping it may cause damage to the sensitive electronics within the unit.
- Use the device in conjunction with an UPS if possible.
- Power down the unit before connecting and disconnecting accessories and peripherals.
- A factory recommended HDD should be used for this device.
- Improper use or replacement of the battery may result in hazard of explosion. Replace with the same or equivalent type only. Dispose of used batteries according to the instructions provided by the battery manufacturer.

Table of Contents




Chapter 1 Description of Panels.....	7
1.1 Front Panel.....	7
1.2 Rear Panel.....	8
Chapter 2 Installation and Connections.....	9
2.1 DVR Installation.....	9
2.2 Hard Disk Installation.....	9
2.3 HDD Storage Calculation Chart.....	11
Chapter 3 Menu Operation.....	12
3.1 Menu Structure.....	12
3.2 Activating Your Device.....	13
3.3 Login and Logout.....	14
3.4 Configuring the Signal Input.....	15
3.5 Using the Setup Wizard.....	17
3.6 Network Settings.....	18
3.7 Adding IP Cameras.....	19
3.8 Live View.....	21
3.9 Recording Settings.....	22
3.10 Playback.....	23
3.11 Backup.....	24
3.12 Alarm Settings.....	26
3.13 Setting Email.....	27
Chapter 4 Remote Control.....	29
4.1 Accessing by Web Browser.....	29
4.2 Accessing by mobile.....	32
4.3 Accessing by client.....	33
Chapter 5 Software Download.....	36

Chapter 1 Description of Panels

1.1 Front Panel



Description of Front Panel

No.	Icon	Description
1		Turns red when DVR is powered up.
2		Turns red when data is being read from or written to HDD.
3		Flickers blue when network connection is functioning properly.

1.2 Rear Panel

The rear panel are various according to different models. Please refer to the actual product. The following figure is for reference only.



Description of Rear Panel

No.	Item	Description
1	VIDEO IN	BNC interface for TVI and analog video input.
2	AUDIO IN	RCA connector
3	AUDIO OUT	RCA connector
4	VGA	DB15 connector for VGA output. Display local video output and menu.
5	HDMI	HDMI video output connector.
6	USB Port	Universal Serial Bus (USB) port for additional devices.
7	Network Interface	Connector for network
8	Power Supply	12V DC power supply.
9	GND	Ground

Chapter 2 Installation and Connections

2.1 DVR Installation

During the installation of the DVR:

1. Use brackets for rack mounting.
2. Ensure there is ample room for audio and video cables.
3. When installing cables, ensure that the bend radius of the cables are no less than five times than its diameter.
4. Allow at least 2cm (\approx 0.75-inch) of space between racks mounted devices.
5. Ensure the DVR is grounded.
6. Environmental temperature should be within the range of -10° C to 55° C, 14° F to 131° F.
7. Environmental humidity should be within the range of 10% to 90%.

2.2 Hard Disk Installation

Before you start:

Before installing a hard disk drive (HDD), please make sure the power is disconnected from the DVR. A factory recommended HDD should be used for this installation.

One or two SATA hard disks can be installed depending on different models.

Tools Required: Screwdriver.

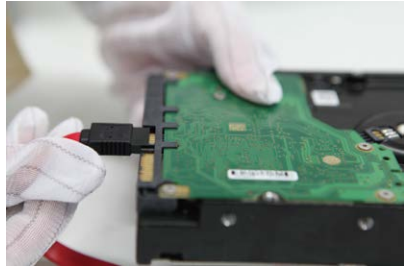
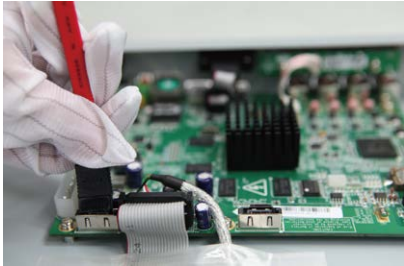
As the installation steps of HDD are similar among different models.

Steps:

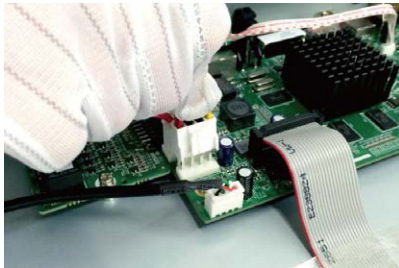
1. Remove the cover from the DVR by unfastening the screws on the back and side.



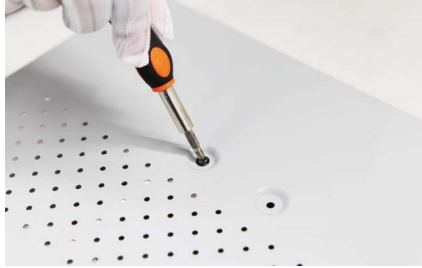
2. Connect one end of the data cable to the motherboard of DVR and the other end to the HDD.



3. Connect the power cable to the HDD.



4. Place the HDD on the bottom of the device and then fasten the screws on the bottom to fix the HDD.



5. Re-install the cover of the DVR and fasten screws.

2.3 HDD Storage Calculation Chart

The following chart shows an estimation of storage space used based on recording at one channel for an hour at a fixed bit rate.

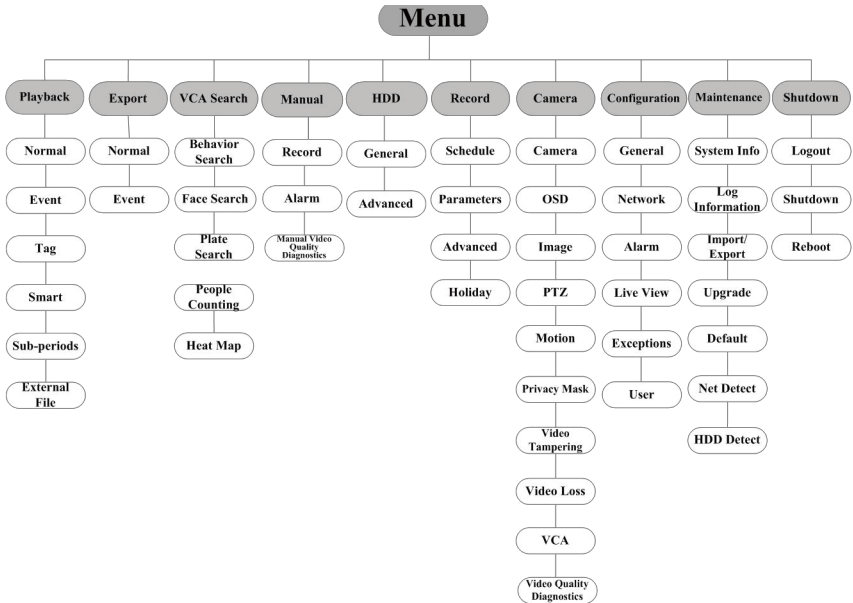
Bit Rate	Storage Used
320K	140M
384K	168M
448K	196M
512K	225M
640K	281M
768K	337M
896K	393M
1024K	450M
1280K	562M
1536K	675M
1792K	787M
2048K	900M
4096K	1.76G
8192K	3.52G

Please note that supplied values for storage space used are just for reference. Storage space used is estimated by formulas and may have some deviation from actual value.

Chapter 3 Menu Operation

3.1 Menu Structure

The menu structure varies according to different models.



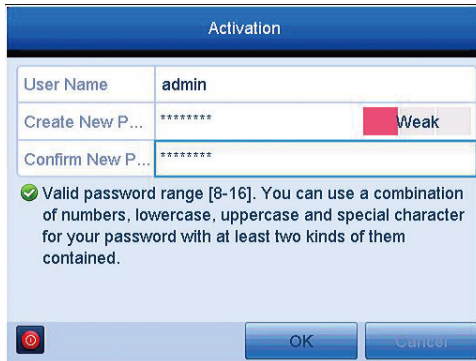
The interface may be different between different models and different software versions.

3.2 Activating Your Device

For the first-time access, you need to activate the device by setting an admin password. No operation is allowed before activation. You can also activate the device via Web Browser, SADP or client software.

Steps:

1. Input the same password in the text field of **Create New Password** and **Confirm New Password**.
2. Please keep the password well and don't forget it.

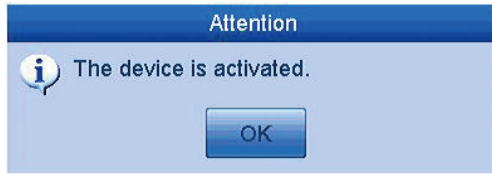


Activation	
User Name	admin
Create New P...	***** Weak
Confirm New P...	*****
<p>✔ Valid password range [8-16]. You can use a combination of numbers, lowercase, uppercase and special character for your password with at least two kinds of them contained.</p>	
<p>OK Cancel</p>	



STRONG PASSWORD RECOMMENDED– *We highly recommend you create a strong password of your own choosing (using a minimum of 8 characters, including upper case letters, lower case letters, numbers, and special characters) in order to increase the security of your product. And we recommend you reset your password regularly, especially in the high security system, resetting the password monthly or weekly can better protect your product.*

3. Click **OK** to save the password and activate the device.



3.3 Login and Logout

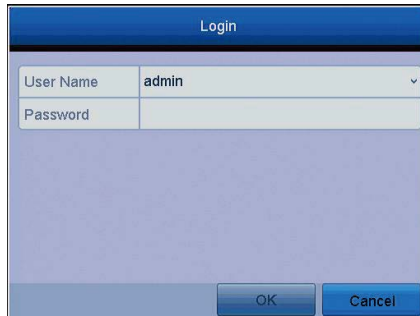
User Login

Purpose:

You have to log in to the device before operating the menu and other functions.

Steps:

1. Select the **User Name** in the dropdown list.



2. Input **Password**.
3. Click **OK** to log in.

In the Login dialog box, if you enter the wrong password 7 times, the current user account will be locked for 60 seconds.

User Logout

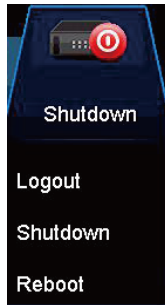
Purpose:

After logging out, the monitor turns to the live view mode and if you want to perform any operations, you need to enter user name and password log in again.

Steps:

1. Enter the Shutdown menu.

Menu > Shutdown



2. Click **Logout**.



After you have logged out the system, menu operation on the screen is invalid. It is required to input a user name and password to unlock the system.

3.4 Configuring the Signal Input

After the start up and login, the device system enters the Wizard for configuring the signal input.



You can also click Menu > Camera > Signal Input Status to configure the signal input.

Steps:

1. Check the checkbox to select different signal input types: TVI, or AHD/CVBS.
2. Click **Apply** to save the settings.



- Picture is for reference only, please consult with the real products.
- The AHD signal input is supported by some series DVR only.

- For some series DVR, each two video channels are grouped in sequence, e.g., CH01 and CH02, CH03 and CH04, etc., and the two channels in the same group must be connected with the same type of video source, i.e., the analog or HD-TVI or AHD video input. And for some series DVR, each four video channels are grouped in sequence.
- In the live view interface, when there is no video signal of the analog channel, the corresponding connectable video signal type message can be displayed on the screen.

3.5 Using the Setup Wizard

The Setup Wizard can walk you through some important settings of the device. By default, the Setup Wizard starts once the device has loaded.

Check the checkbox to enable Setup Wizard when device starts. Click **Next** to continue the setup wizard. Follow the guide of the Setup Wizard to configure the system resolution, system date/time, network settings, HDD management, record settings, etc.



3.6 Network Settings

Network settings must be properly configured before you operate DVR over network.

Steps:

1. Enter the Network Settings interface.
Menu > Configuration > Network

NIC Type	10M/100M Self-adaptive		
Enable DHCP	<input checked="" type="checkbox"/>		
IPv4 Adresse...	192.168.0.9	IPv6 Adresse...	fe80::2a57:beff:feea:a2bd/64
IPv4 Subn...	255.255.255.0	IPv6 Adresse...	
IPv4 Defa...	192.168.0.1	IPv6 Defa...	
MAC Address	28:57:be:ea:a2:bd		
MTU(Bytes)	1500		
Preferred DNS Server	202.96.128.166		
Alternate DNS Server	202.96.134.133		

2. Select the **General** tab.
3. In the **General Settings** interface, you can configure the following settings: NIC Type, IPv4 Address, IPv4 Gateway, MTU and DNS Server.

If the DHCP server is available, you can check the checkbox of **DHCP** to automatically obtain an IP address and other network settings from that server.

4. After having configured the general settings, click the **Apply** button to save the settings.

3.7 Adding IP Cameras

Purpose:

Before you can get live video or record the video files, you should add the network cameras to the connection list of the device.

Before you start:

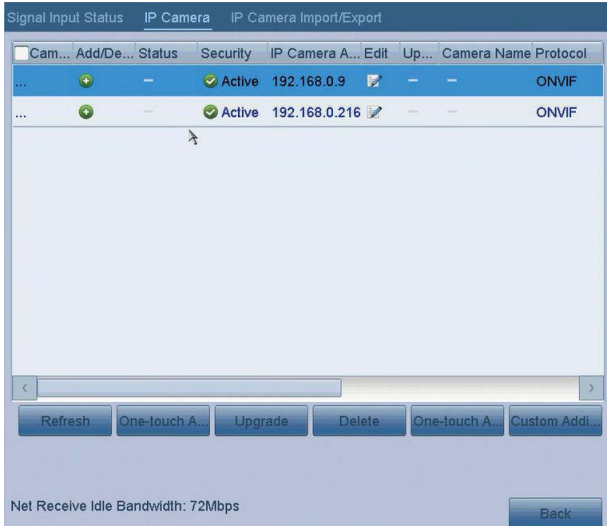
Ensure the network connection is valid and correct, and the IP camera to add


has already been activated. Please refer to the *User Manual* for activating the inactive IP camera.

You can select one of the following three options to add the IP camera.

Steps:

1. Select the **Add IP Camera** option from the right-click menu in live view mode or click Menu> Camera> Camera to enter the IP camera management interface.



2. Select the IP camera from the list and click the  button to add the camera (with the same admin password of the DVR's), or click the **Custom Adding** button to pop up the Add IP Camera (Custom) interface.

Add IP Camera (Custom)

No.	IP Address	Amount of...	Device M...	Protocol	Managen
1	172.6.23.177	1			8000

IP Camera Address	172.6.23.177
Protocol	
Management Port	8000
User Name	admin
Admin Password	*****

3. Select the detected IP camera and click the **Add** button to add it directly, and you can click the **Search** button to refresh the online IP camera manually.

Or you can choose to custom add the IP camera by editing the parameters in the corresponding text field and then click the **Add** button to add it.

3.8 Live View

Some icons are provided on screen in Live View mode to indicate different camera status. These icons include:

Live View Icons

In the live view mode, there are icons at the right top of the screen for each channel, showing the status of the record and alarm in the channel, so that you can find problems as soon as possible.



Indicating that there is an alarm or are alarms. Alarm includes video loss, tampering, motion detection or sensor alarm, etc.



Recording (manual record, continuous record, motion detection or alarm triggered record)



Alarm & Recording



Event/Exception (event and exception information, appears at the lower-left corner of the screen.)

3.9 Recording Settings

Before you start:

Make sure that the disk has already been installed. If not, please install a disk and initialize it. You may refer to the user manual for detailed information.

Purpose:

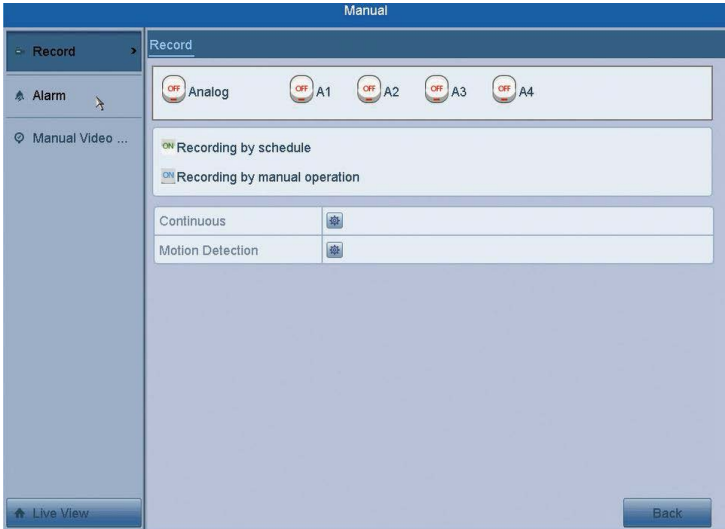
Two kinds of record types are introduced in the following section, including Instant Record and All-day Record. And for other record types, you may refer to the user manual for detailed information.



After rebooting all the manual records enabled are canceled.

Steps:

1. On the live view window, right click the window and move the cursor to the Menu>Manual>Record, and select **Continuous Record** or **Motion Detection Record** on your demand.



2. Click the **Yes** button in the pop-up Attention message box to confirm the settings. All the channels will start to record in the selected mode.

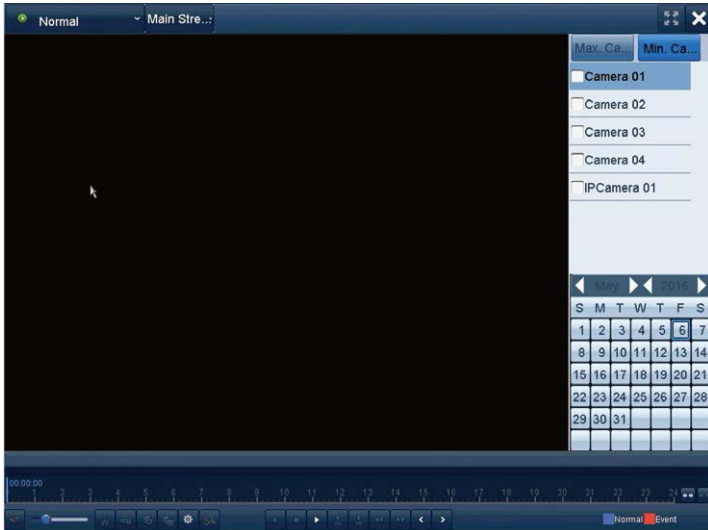
3.10 Playback

The recorded video files on the hard disk can be played back in the following modes: instant playback, all-day playback for the specified channel, and playback by normal/event/smart/tag/sub-periods/external file search.

Steps:

1. Enter playback interface. Click Menu>Playback.
2. Check the checkbox of channel(s) in the channel list and then double-click to select a date on the calendar.
3. You can use the toolbar in the bottom part of Playback interface to

control playing progress.



4. Select the channel(s) you want to play back by checking the checkbox(s), or execute simultaneous playback of multiple channels.

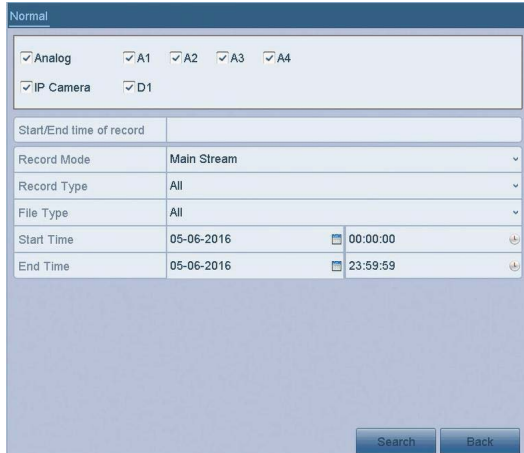
3.11 Backup

Before you start:

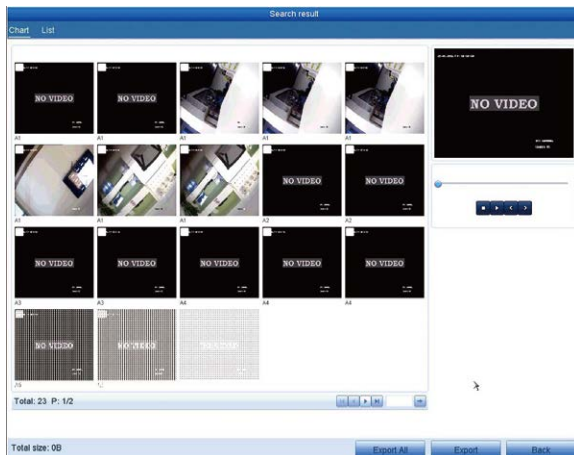
Please insert the backup device(s) into the device.

Steps:

1. Enter Export interface.
Menu>Export>Normal
2. Select the cameras to search.
3. Set search condition and click **Search** button to enter the search result interface.



4. Set search condition and click **Search** button to enter the search result interface. The matched video files are displayed in **Chart** or **List** display mode.
5. Select video files from the **Chart** or **List** interface to export.



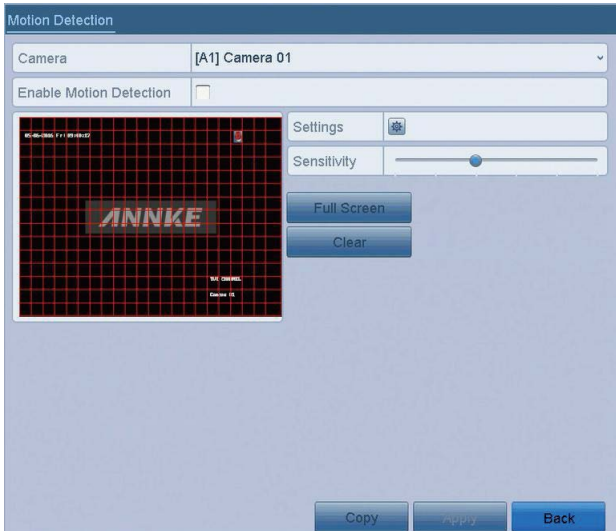
6. Export the video files.


3.12 Alarm Settings

Steps:

1. Enter Motion Detection interface of Camera Management and choose a camera you want to set up motion detection.

Menu> Camera> Motion Detection



2. Set detection area and sensitivity.
Check checkbox to enable motion detection, use the mouse to draw detection area(s) and drag the sensitivity bar to set sensitivity.
Click  to set alarm response actions.
3. Click **Trigger Channel** tab and select one or more channels which will start to record or become full-screen monitoring when motion alarm is triggered.
4. Set arming schedule of the channel.
Select **Arming Schedule** tab to set the channel's arming schedule.

5. Click **Linkage Action** tab to set up alarm response actions of motion alarm.
6. If you want to set motion detection for another channel, repeat the above steps or just copy the above settings to it.

3.13 Setting Email

Before configuring the Email settings, the NVR must be connected to a local area network (LAN) that maintains an SMTP mail server. The network must also be connected to either an intranet or the Internet depending on the location of the e-mail accounts to which you want to send notification.

Steps:

1. Enter the Network Settings interface.
Menu > Configuration > Network > General.
2. Set the IPv4 Address, IPv4 Subnet Mask, IPv4 Gateway and the Preferred DNS Server in the Network Settings menu, as shown in below.

NIC Type	10M/100M/1000M Self-adaptive
Enable DHCP	<input checked="" type="checkbox"/>
IPv4 Address	10 .16 .1 .13
IPv4 Subnet Mask	255 .255 .255 .0
IPv4 Default Gateway	10 .16 .1 .254
IPv6 Address 1	fe80::c256:e3ff:fe33:299d/64
IPv6 Address 2	
IPv6 Default Gateway	
MAC Address	c0:56:e3:33:29:9d
MTU(Bytes)	1500
Preferred DNS Server	10.1.7.88
Alternate DNS Server	10.1.7.77

3. Click **Apply** to save the settings.
4. Select the Email tab to enter the Email Settings interface.

Enable Server Authentic...	<input checked="" type="checkbox"/>
User Name	user1
Password	*****
SMTP Server	xxx.smtp.com
SMTP Port	25
Enable SSL	<input type="checkbox"/>
Sender	name1
Sender's Address	name@xxx.com
Select Receivers	Receiver 1
Receiver	name2
Receiver's Address	name2@xxx.com
Enable Attached Picture	<input checked="" type="checkbox"/>
Interval	2s

5. Configure the following Email settings:

Enable Server Authentication (optional): Check the checkbox to enable the server authentication feature.

User Name: The user account of sender's Email for SMTP server authentication.

Password: The password of sender's Email for SMTP server authentication.

SMTP Server: The SMTP Server IP address or host name (e.g., smtp.263xmail.com).

SMTP Port No.: The SMTP port. The default TCP/IP port used for SMTP is 25.

Enable SSL (optional): Click the checkbox to enable SSL if required by the SMTP server.

Sender: The name of sender.

Sender's Address: The Email address of sender.

Select Receivers: Select the receiver. Up to 3 receivers can be configured.

Receiver: The name of user to be notified.

Receiver's Address: The Email address of user to be notified.

Enable Attached Pictures: Check the checkbox of **Enable Attached Picture** if you want to send email with attached alarm images. The

interval is the time of two adjacent alarm images. You can also set SMTP port and enable SSL [here](#).

Interval: The interval refers to the time between two actions of sending attached pictures.

E-mail Test: Sends a test message to verify that the SMTP server can be reached.

6. Click **Apply** button to save the Email settings.

Chapter 4 Remote Control

4.1 Accessing by Web Browser



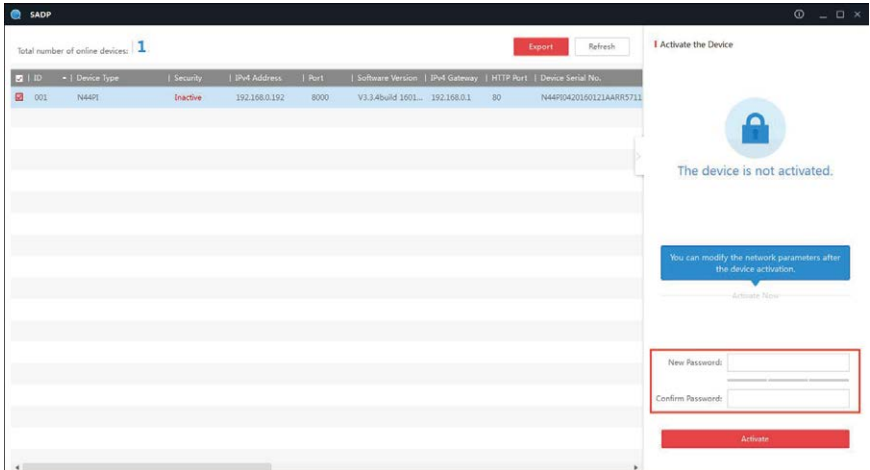
You shall acknowledge that the use of the product with Internet access might be under network security risks. For avoidance of any network attacks and information leakage, please strengthen your own protection. If the product does not work properly, please contact with your dealer or the nearest service center.

You are required to activate the camera first by setting a strong password for it before you can use the camera.

Activation via SADP, and Activation via Client Software are all supported. We take activation via SADP software and as examples to introduce the camera activation. You can find the software in the CD.

Steps:

1. Run the SADP software to search the online devices.



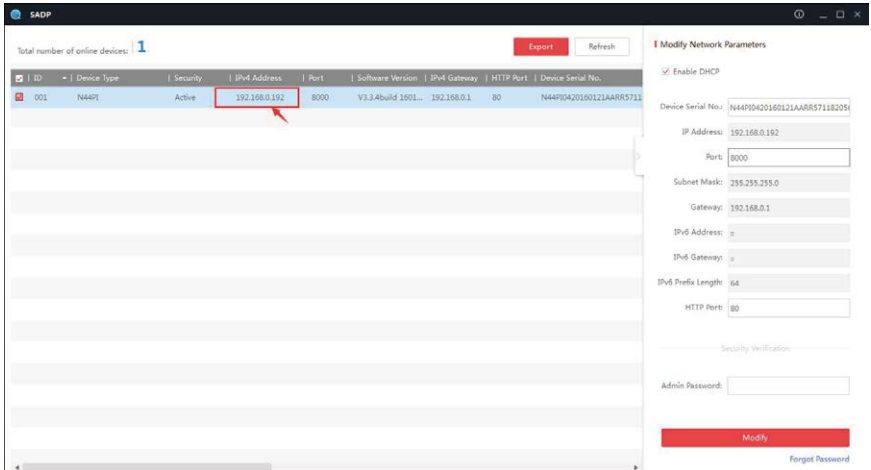
2. Check the device status from the device list, if you have activated the device ,just jump to step 4, if the device is inactive, just activate it.

3. Create a password and input the password in the password field, and confirm the password.

4. Click OK to save the password.

You can check whether the activation is completed on the popup window. If activation failed, please make sure that the password meets the requirement and try again.

5. If activation succeed ,the security status will show “Active”,then double click IP address to web browser.



6. Login the device.

Enter the user name “admin” and password you just set in the login interface, and click the **Login** button.



7. Install the plug-in before viewing the live video and managing the camera. Please follow the installation prompts to install the plug-in.



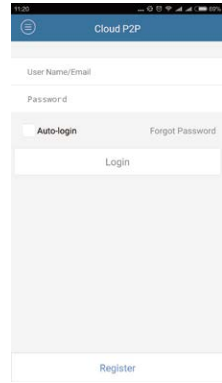
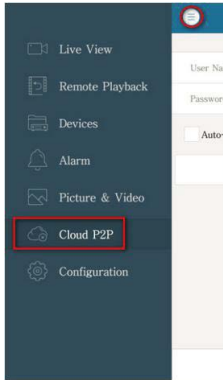
You may have to close the web browser to finish the installation of the plug-in.


4.2 Accessing by mobile

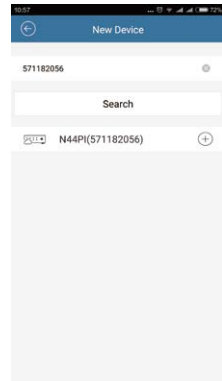
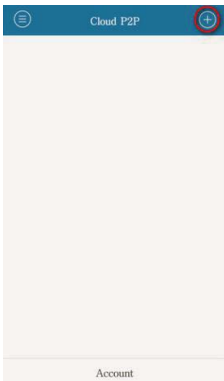
Search *Annke View* o in the Apple APP Store or Google Play, and install the App on your smart devices. Here we use *Annke View* to show .

Steps:

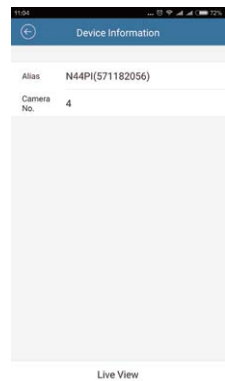
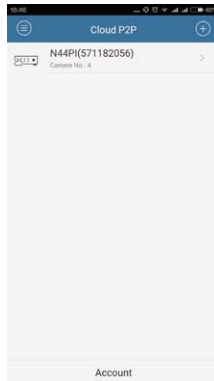
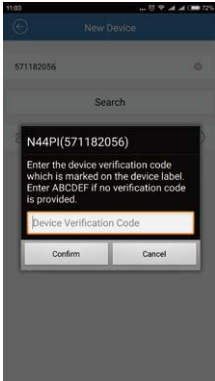
1. Launch the APP, click Cloud P2P , register an account and login.



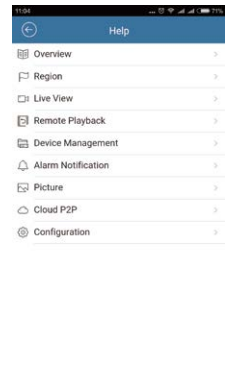
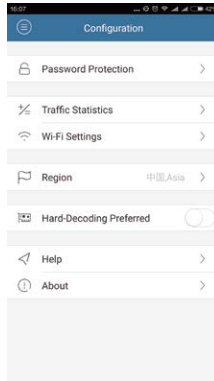
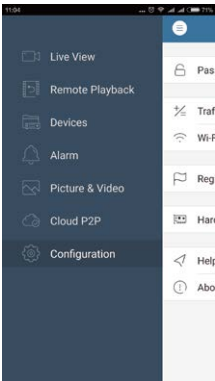
2. Click , Scan QR code on the label at the bottom of the device or QR code in the interface of Menu-Configuration-Network-Platform Access.



3. Input verification code just in the same place on the label or in the Platform Access interface,Click device to start live view.



For more information you can click “MENU” button -Configuration-Help .

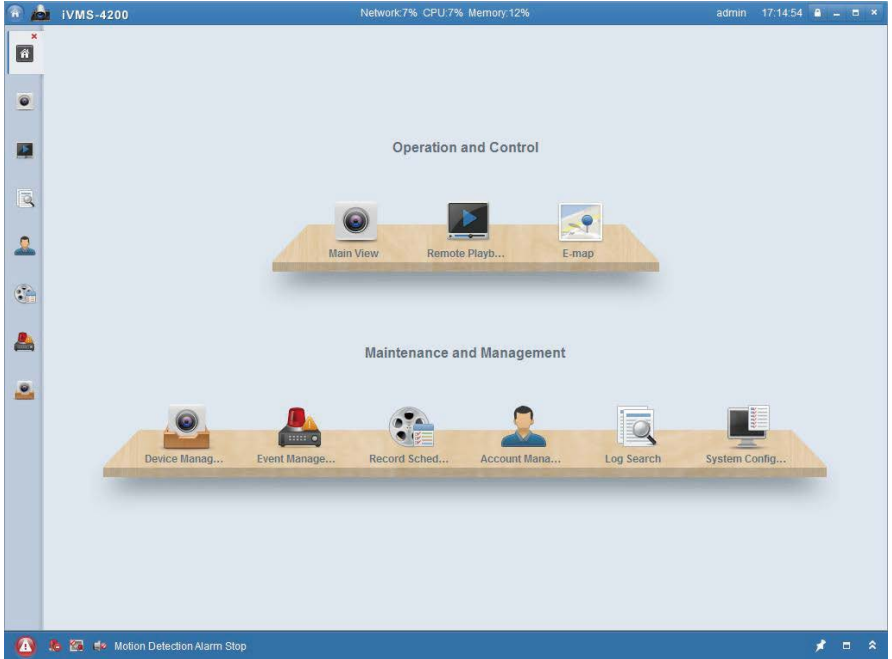


4.3 Accessing by client

The product CD contains the *iVMS-4200* client software . You can view the live video and manage the camera with the client software.

Follow the installation prompts to install the software. The control panel and

live view interface of *iVMS-4200* are shown below.



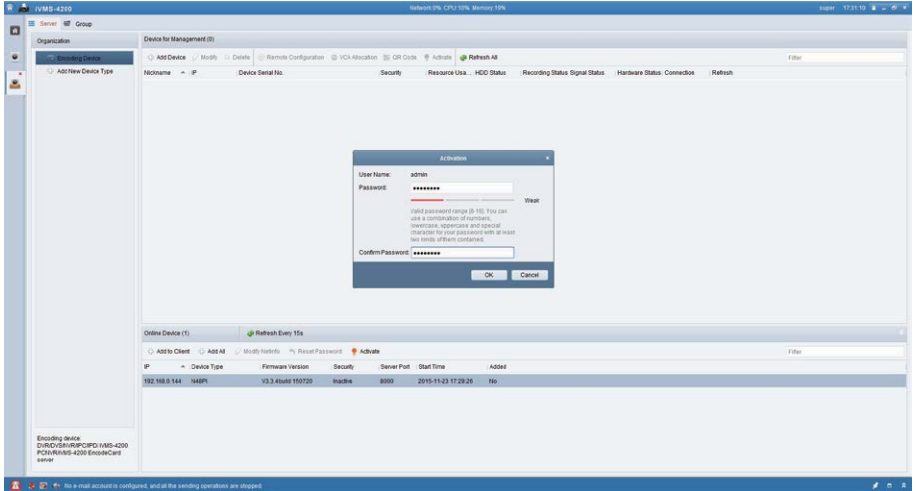
Steps:

1. Activate device

If your device have activated you can go Step 2 directly.

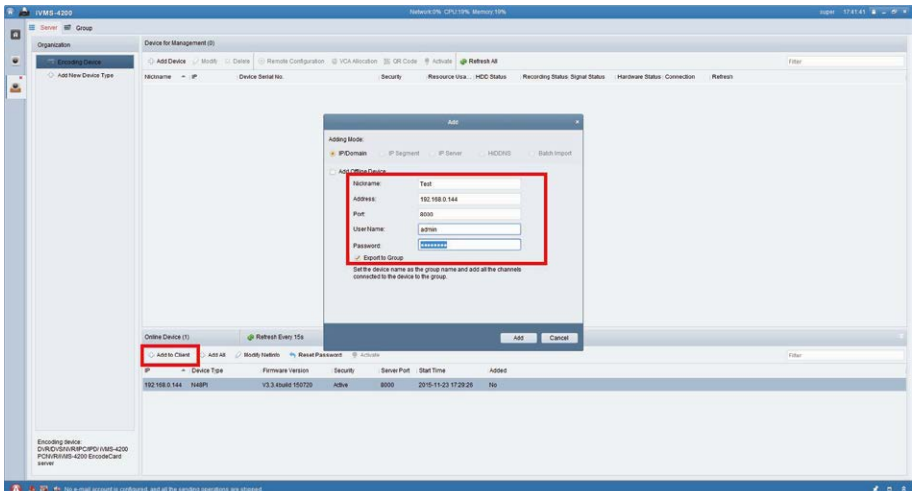
Go to Control Panel-Device Management

On the bottom of the screen in the Online Devices section the screen will display all devices on the network. The “Security” will display whether the DVR/NVR is active or not .If the NVR is “Inactive,” highlight the NVR and press the Activate button to display the “Activation” window , then enter a new password into the “Password” field , retype the password into the “Confirm Password” field,press the OK button ,and then it will be activated.



2. Add device

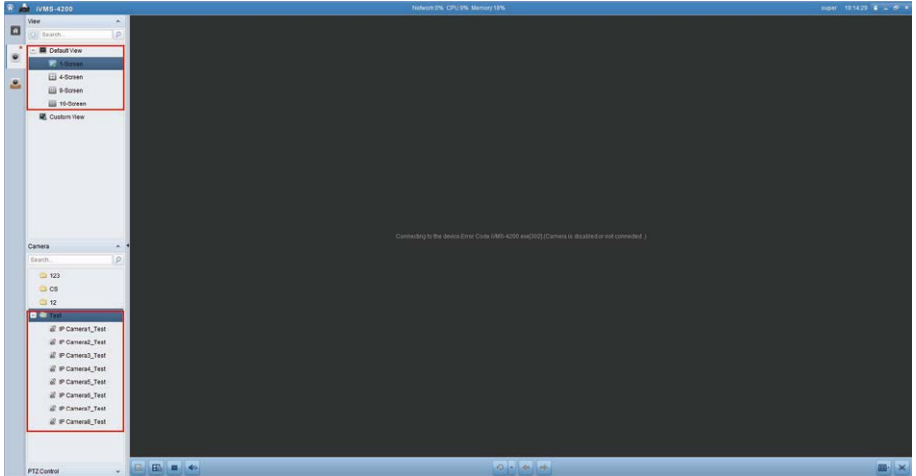
Click “Add to Client”, it will shown “Add” window, here need input Nickname、user name、password (the password is same as your activated password) ,then click add to add the device to client .



3. Live view

Go to **Control Panel—Main View**

You can choose view screen,16 channel in one screen maximum ,and if you have added IPC,you can get a live view in the screen.



For more information ,press F1 to get user manual .

Chapter 5 Software Download

If your PC do not have a CD-ROM drive,you can download the sofewares and manul via Internet.

1 Visit www.annke.com

2 Search DN41R, DN81R or DN61R

3 Click the “Downloads” to choose and get what you want in the list

Tech support: support@annke.com

ANNKE

Kurzanleitung des digitalen Videorecorder



www.annke.com

Vorstellung von der Oberfläche

Die Rückseite ist unterschiedlich, je nachdem welches Modell Sie haben. Bitte achten Sie auf das tatsächlichen Produkt. Das folgende Bild ist nur für Referenz gültig.



DN81R

Beschreibung von Rückseite:

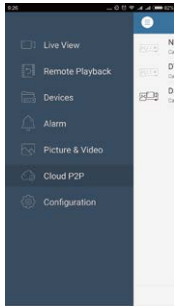
Nr.	Artikel	Beschreibung
1	VIDEO Eingang	BNC für TVI und Analog-Video Eingang.
2	AUDIO Eingang	RCA Stecker
3	AUDIO Ausgang	RCA Stecker
4	VGA	DB15 Stecker für VGA-Ausgang. Lokales Video und Menü anzeigen.
5	HDMI	HDMI Stecker für Video-Ausgang.
6	USB Anschluss	USB für externe Geräte.
7	Netzwerk-Anschluss	Stecker für Netzwerk
8	Netzteil	12V DC Netzteil.
9	GND	Boden

Zugriff über mobilen Geräten

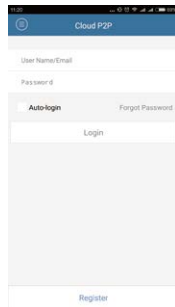
1. Starten Sie Ihr mobiles Geräte und stellen Sie sicher, dass es mit dem Internet verbindet.
2. Suchen Sie **“Annke View”** beim **Apple App Store** oder **Google Play**, laden Sie die APP herunter und installieren Sie auf Ihren mobilen Geräte.
3. Registrieren Sie einen Account, fügen Sie Geräte hinzu und benutzen Sie die APP.



Starten Sie die APP



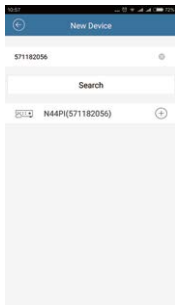
“Cloud P2P” auswählen



Registrieren und anmelden



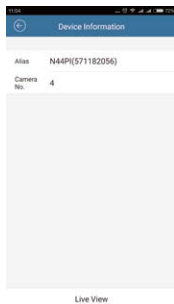
QR-Code auf Gerät scannen



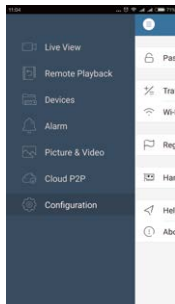
Neue Geräte hinzufügen



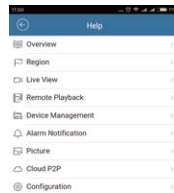
Bestätigungscode eingeben



Klicken, um Live anzusehen



Für mehr Informationen, klicken Sie bitte “Hilfe”



Software herunterladen

Wenn Ihr PC keine CD-ROM hat, können Sie die entsprechende Software herunterladen.

1. Suchen Sie www.annke.com

2. Suchen Sie DN41R, DN81R oder DN61R

3. Klicken Sie "Herunterladen", um die gewünschte Software zu wählen und zu bekommen.

Technischer Support: support@annke.com